

KRONES new visualisation
Machine operation made easy



Task-oriented machine operation

The operating terminal is the main information and input centre on a machine. With its new visualisation system, KRONES has made the terminal even more responsive to the needs and knowledge of the operator. Our engineers have worked closely with our customers to develop a system that is easy to navigate and makes the information available to the user in a clear and easy-to-follow display. The result is an operating concept that allows all processes to be intuitively monitored and controlled.

Task orientation is at the heart of the new visualisation concept. All the information and parameters important for completing a task are made available to the operator on one screen automatically and on an easy-to-follow display. And so all the long and laborious navigating through menus and searching for machine information is now relegated to the past. The new KRONES visualisation concept will save you time and increase the efficiency of your production.

KRONES
K786164

1 - 001 1,500l water-bottle 001 still water
15:15:22 08/24/2009
User: Krones

Blowing Machine | Preform Supply

ButtonBar > Blowing Machine

Speed: 28800 C/h

Operating Hours: 131 h

Infeed Preforms: 7532

Discharge Bottles: 7335

Production Counters

Contiform

Blowing Parameters

180°
270°
90°
0°

Preblowing: 12.0 bar, 0.0 bar

Final Blowing: 24.0 bar, 0.0 bar

Heating Control

| | 1 | 2 | 3 | 4 | 5 | 6 | 7 | 8 | 9 | 10 | 11 | 12 | 13 |
|---|----|---|---|---|---|---|---|---|---|----|----|----|----|
| 1 | 95 | | | | | | | | | | | | |
| 2 | 50 | | | | | | | | | | | | |
| 3 | 50 | | | | | | | | | | | | |
| 4 | 30 | | | | | | | | | | | | |
| 5 | 50 | | | | | | | | | | | | |
| 6 | 50 | | | | | | | | | | | | |
| 7 | 50 | | | | | | | | | | | | |
| 8 | 0 | | | | | | | | | | | | |
| 9 | 0 | | | | | | | | | | | | |

Mould Temperature

Rejection

Service Rejection

Preform

Bottle

Production Functions

Air Recycling

Ausgang: 22.4 °

Actual Value: 0.0 bar

State: Automatic

Preform Temperature

Set-Point: 118 °C

Actual Value: 0 °C

State: Fixed Output

Oven Temperature

Actual Value: 0 °C

Temperature: 40 °C

Open Preform-Stop

State: Fixed Output

ErgoBloc L | Production | Functions | Type | Messages | MES

A perceptive style guide

KRONES has laid down new design guidelines for operating terminals in the form of a style guide which incorporates the findings made in perception psychology. This looks at how people perceive and process information. Based on these findings, KRONES has succeeded in tuning the layout and representation of key information and functions to the needs of the user. Equally important here is the well-designed colour-coding system and the size and labelling of elements.

KRONES
K786164

1 - 001 1,500l water-bottle 001 still water
11:07:10 08/24/2009
User: Krones

Labeling station 1 | Labeling station 2

SubBar > Labeling station 1

Speed: 28800 C/h

Operating Hours: 0

Production counter: 0

Station 1 Control

Label counter

Reel 1: Produced labels 0, Labels until end of reel 0

Reel 2: Produced labels 0, Labels until end of reel 0

Absolute end of reel: 0

Temperatures

Glue tool: 0

Glue roller 1: 0

Timer

Label cutting optimization

Threshold: 0

Cutting position register mark: 0

Cut deviation: 0

Label feed

Register mark width

Min. set-point value: 0

Max. set-point value: 0

Actual value: 0

Product level

Set-point value: 60 mm

Actual value: 64 mm

Temperature: 19 °C

Product feed

Pressure: 5.59 bar

Filling valve control

Program selection filter

Filter Production

PSM diagram filter

PSM diagram flushing

Program selection bottom cooling

PSM diagram bottom cooling

Bottom cooling

Temperature: 19 °C

Valves and pumps

Production functions

ErgoBloc L | Production | Functions | Type | Messages | MES

KRONES
K786164

1 - 001 1,500l water-bottle 001 still water
12:56:11 08/24/2009
User: Operator

General | Display

Menu > Production > General

Actual level level K786-026

23517 l

Operating hours: 846

End last cleaning: 24.08.2009 12:55

Remaining production time: 10 h 6 Min

Program selection

Programs: Basic position

Programs: 1101 Basic position

Vapour barrier product transmission active UV Q620: 0

Product transmission valve closed: 0

Vario Store is not sterile: 0

Vapour barrier transmission to filter active: 0

Filling residual quantity: 0

Consumption counter

Fiber steamed: 13

Measurements

Capacity: 0.0

VarioStore

Sterile air

KV95626

ErgoBloc L | Production | Functions | Type | Messages | MES

Production-optimised operation

Structured control and information system

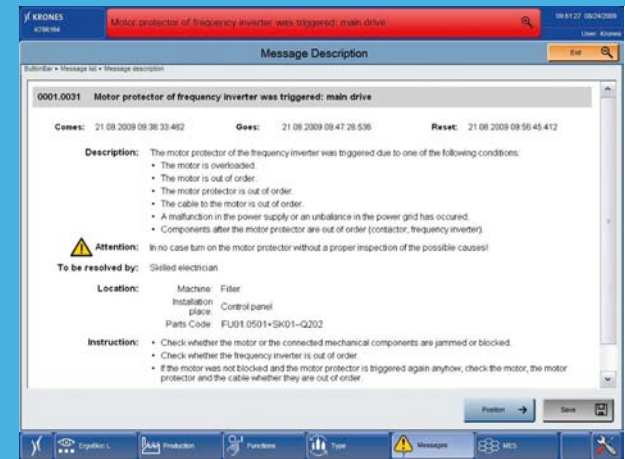
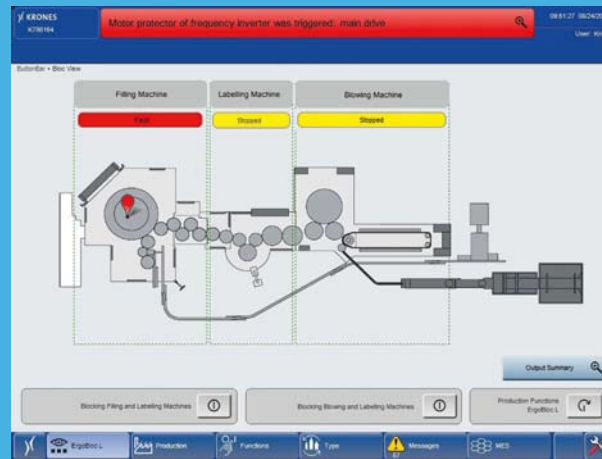
The new KRONES operating concept provides optimum support to operators in the detection and elimination of faults. Error messages are displayed on the terminal in a large and clear format as before, and the help texts that relate to these are designed with a structured and problem-solving approach. As well as providing a problem description, cause and location, the terminal also advises the operator who is responsible for eliminating the error and what specifically needs to be done.

Easy type management system

With the reworking of the type management system, KRONES provides an improved system for all machines. All parameters are accessible via a central user interface. Additional user-friendly functions make working with type management easier.

Direct access to the comprehensive range of KRONES MES software tools

The new KRONES operating concept allows staff to access KRONES MES software tools while working directly on the machine. For example, the operator receives information on the status of the current order and on subsequent production orders in the order overview screen. The required consumables can be ordered directly via the terminal. Maintenance plans, comprehensive reporting systems and various machine-specific documents can also be called up easily.



KRONES AG
Böhmerwaldstraße 5
93073 Neutraubling
Germany

Phone +49 9401 70-0
Fax +49 9401 70-2488
E-mail info@krones.com
Internet www.krones.com

